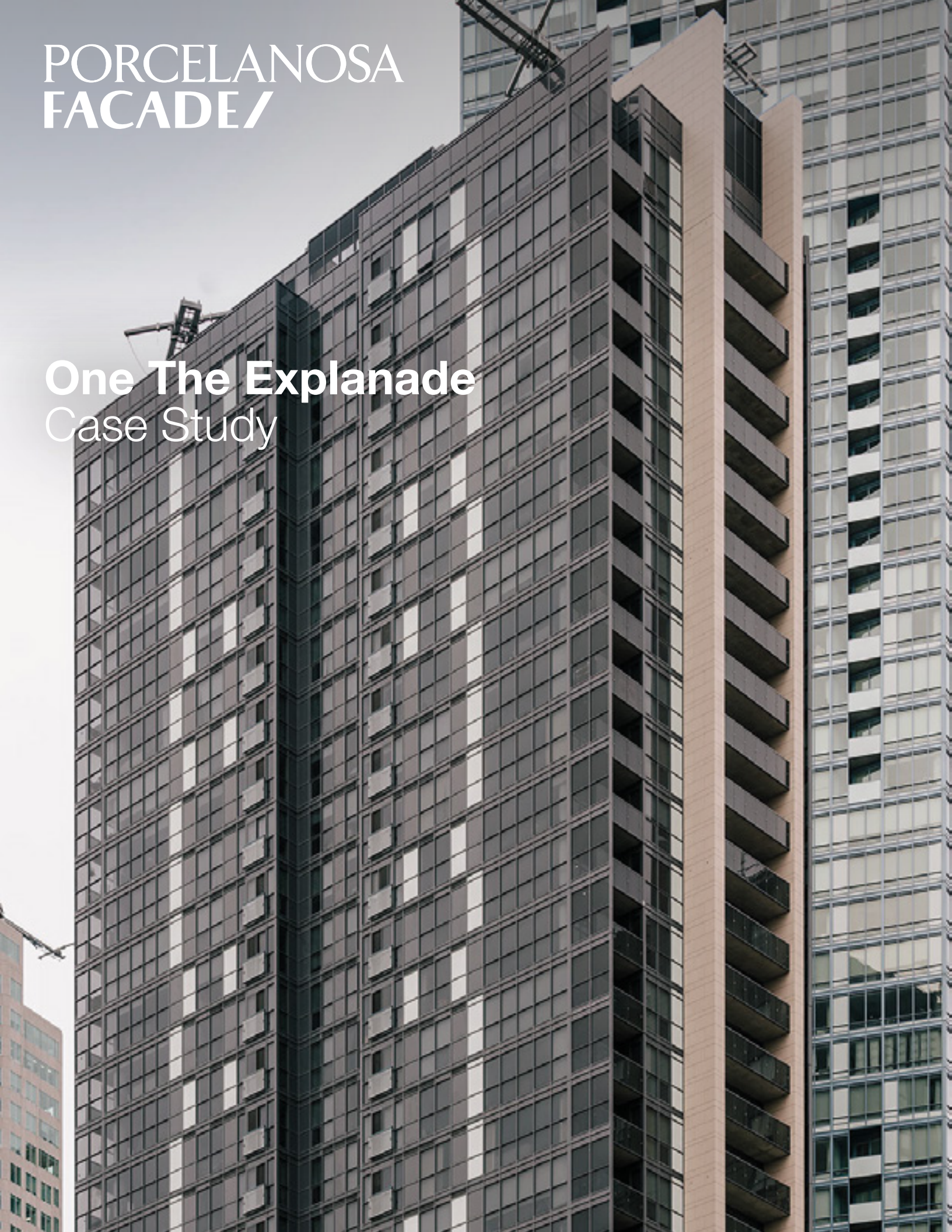


PORCELANOSA
FACADE/

One The Explanade
Case Study



Project
One The Explanade

Location
Toronto, Canada

Architect
Page+Steele Architects

SF
25,500

Installer
Bildtec

Market Segment
Multifamily

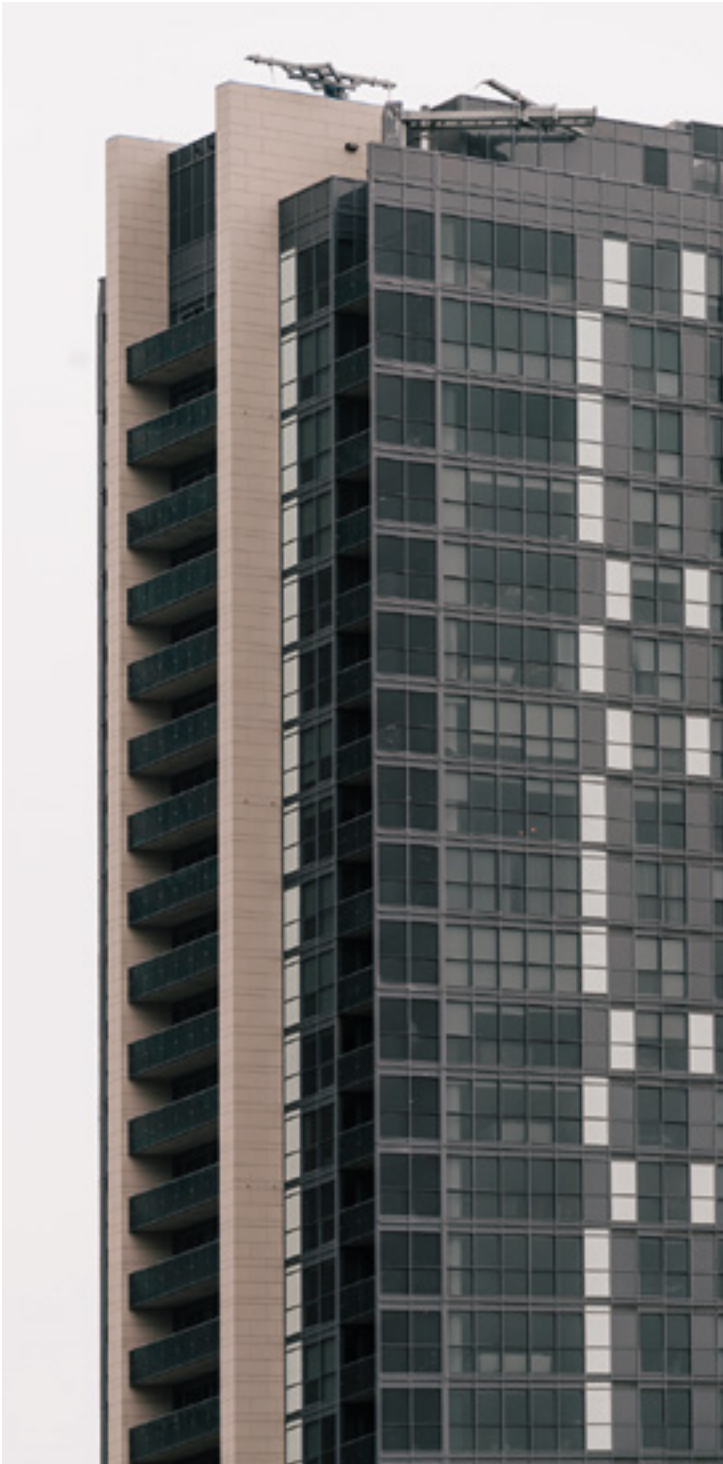
Build Type
New Build

Year
2016

Porcelain
TORONTO CALIZA







HIGH FLEXURAL STRENGTH



RESISTANCE TO FREEZE-THAW



MAINTENANCE
FREE



HIGH WIND-LOAD
RESISTANCE



RESISTANCE TO THERMAL
SHOCK



RESISTANCE TO LIGHT
EXPOSURE/FADING



NON-COMBUSTIBLE



RESISTANCE TO CHEMICAL
ATTACK



ENDLESS FINISHES



NO FLAME SPREAD



CRAZING RESISTANCE



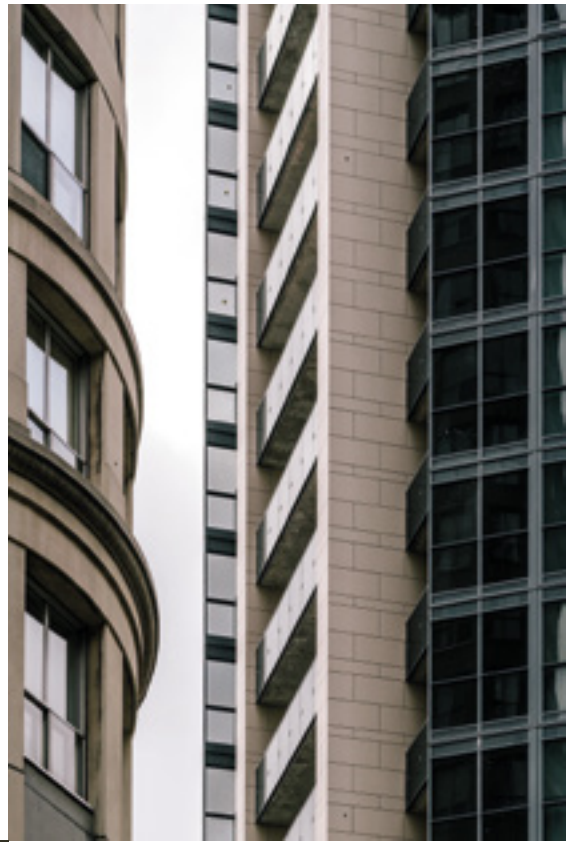
NON-POROUS/IMPERVIOUS



HIGHLY DURABLE



IT'S STONE THAT
YOU CAN DESIGN!





PORCELANOSA FACADE

Toronto, Canada •